

# Neighbourhood Plan Update

1. Why a Neighbourhood Plan is important for Wellow
2. How we are organised to deliver the plan
3. What we are currently working on
4. The role of a vision and set of objectives for the parish

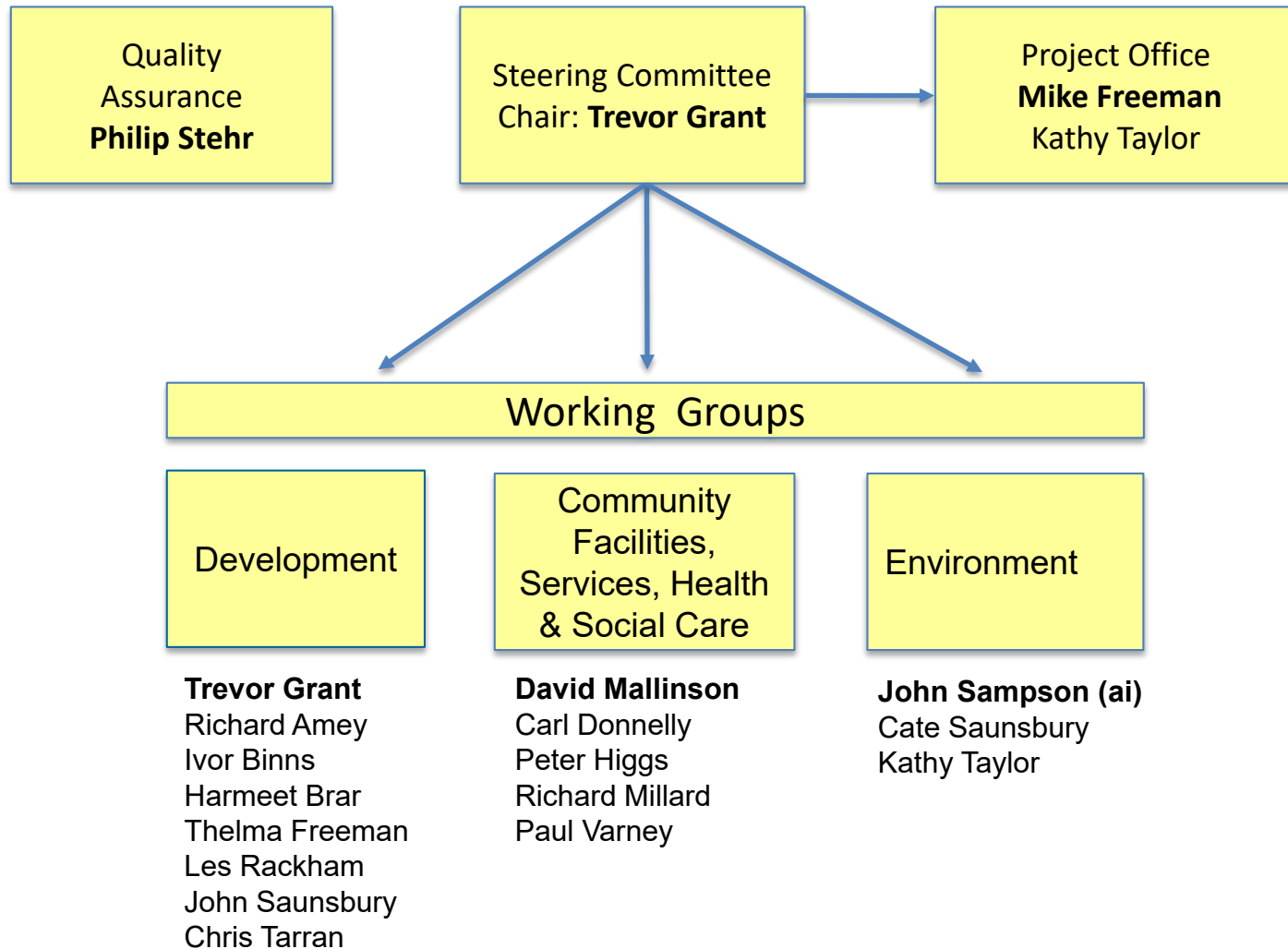
# 1. Why a Neighbourhood Plan is important for Wellow

Based on the experiences of others with Neighbourhood Plans and the latest Government planning guidance, it is clear that communities are being given more of a say in how they can shape their future development.

This means the future development of Wellow parish is in our hands more than just third parties such as Developers, TVBC or Hampshire County Council and in some respects Central Government.

The Neighbourhood Plan should enable us to have much greater say on community planning and to benefit from potential development funding resulting in the provision of further enhanced community services and assets.

# 1. How we are organised to deliver the plan



# What we are currently working on

- ◆ Understanding how best to assess SHELAA sites and other areas of land
- ◆ Developing a vision and set of objectives for the parish
- ◆ Preparing a community survey
- ◆ Ensuring we have a good set of maps
- ◆ Gaining an early understanding on road and traffic issues

# Role of a vision and set of objectives for the parish

