



# ***NIGHTINGALE TIMES***

## ***The On-line Newsletter for Wellow Parish Council***

**[www.wellowparish.org.uk](http://www.wellowparish.org.uk)**

### **Message from the Chair, Dr Peter Chandler.**

2012 was an interesting year to say the least. The new Play Area was fully commissioned, major works on our SSSI site at Wellow Common were begun and the Council finally resolved to initiate a tender process for the replacement of the decaying cricket pavilion.

Our new Clerk, Lesley Weldon, is bringing much needed order to the Parish Office and we have welcomed two new Councillors, Cllr. John Saunders and Cllr. Alan Clark, to fill the casual vacancies left by the departure of Ashley Browning and Guy Gibson. Finally, we have just launched a much improved website which we hope can be used to let parishioners know what is going on and to stimulate some much needed feedback and opinions.

In order to make this website as useful as possible we need information (pictures and text) about what is going on within the Parish. Also please let us know what you would like to see included in future Newsletters and what additional sections you would like to have included on the website. In the meantime, I wish you a "Happy New Year!"

### **Cricket Pavilion**

The 1930's building has reached the end of its useful life and we received a structural report that made it clear that renovation was not a sensible option.



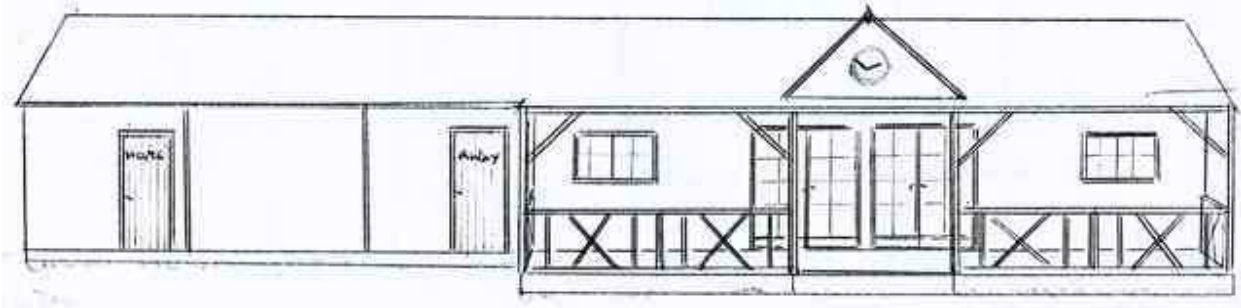
**The existing 1930's Pavilion and the big oak!**

WPC resolved to initiate the necessary tender process to replace it. We have set up a working group, Chaired by Cllr. Angela Ratcliffe, to finalise the design which will then be submitted to TVBC planning for approval. Once we have this then we can go out to tender. It is worth mentioning that this is a WPC building and not, as some may have assumed, owned by Wellow

**Wellow Parish Council, Parish Office, Village Hall, Buttons Lane, West Wellow,  
Hampshire SO51 6BR Tel: 01794 323275 Email: [wellowparish@btconnect.com](mailto:wellowparish@btconnect.com)**

**January 2013**

and Plaitford Cricket Club. We will therefore have to draw up a new lease for the Club and also work with them to try and minimise the impact on home matches next season. For the building itself, we have opted for a timber frame construction having the same footprint as the existing structure. The main difference will be that we are adding extra changing facilities so that it can be used by both male and female teams. We also need “tree friendly” foundations. An outline of what we have in mind is shown below.



**Initial idea for the replacement Pavilion,**

### **Wellow Common**

WPC own the Common which is part of the New Forest National Park and a designated SSSI (Site of Special Scientific Interest). We have a Management Plan which has been agreed with Natural England and we have annual funding to implement it.

One of the routine activities is gorse cutting which is needed to maintain an open heath. This is carried out on a five year cycle within defined areas shown below. Work at the end of 2012 cleared gorse from areas 7 and 8a.



### **Common Management Plan**

WPC are also responsible for the two car parks (Monkey Jump & Plantation Road) as well as the adjoining tracks. A plan has been drawn up to repair and where necessary, re-surface these areas and to restore the tracks to their original 3m width. We will also re-dig the ditch line and replace missing and rotten dragons teeth and boundary logs. This long overdue maintenance work is scheduled for Spring 2013.

Dog Owners. **PLEASE** clean up after your dogs and use the bins provided especially at our Common car park areas. Our thanks to all those who do!

**Wellow Parish Council, Parish Office, Village Hall, Buttons Lane, West Wellow,  
Hampshire SO51 6BR Tel: 01794 323275 Email: [wellowparish@btconnect.com](mailto:wellowparish@btconnect.com)**