



**National
Trust**

info.newforest@nationaltrust.org.uk

Direct Line: 01425650035

My Ref: TTW2017-18

10 July 2017

UPCOMING FORESTRY OPERATIONS ON BRAMSHAW COMMONS

To whom it may concern,

In the next couple of weeks you may notice coloured markings appearing on tree trunks on the Bramshaw Commons; Half Moon, Furzley, Blackhill and Cadnam. The National Trust will be undertaking a series of tree thinning and tree removal in this area, notably species of pine, turkey oak and occasional birch.

Our New Forest Northern Commons are designated at Special Sites of Scientific Interest (SSSI) and are fantastic examples of outstanding lowland heathland and mire habitats supporting some of Europe's rarest wildlife. The commons are protected by the Wildlife and Countryside Act (1981) and we must undertake this work to comply with our duty to maintain the common under 'favourable' status as part of our SSSI Higher Level Stewardship agreement. This work will reduce the density of the seed bearing trees whose saplings threaten the fragile open heathland habitats; allowing regrowth of grasses and scrub, increasing bio-diversity. In the long term, insect, reptile and bird life will benefit from these works as well as increasing the grazing potential for the area.

Forestry operations will be carried out during the Autumn and Winter months of 2017-18. It will be undertaken by professional contractors supported by our own staff. The commons will of course remain open access to all, however temporary signage will be erected in work areas to notify visitors. Temporary exclusion zones may be set up for visitor safety when large harvester machines are in operation.

If you have any questions or concerns regarding this work please do not hesitate to contact our office on 01425650035 or email info.newforest@nationaltrust.org.uk.

We will also

Kind regards,

Your New Forest ranger team.

National Trust
New Forest Northern Commons
The Walled Garden, Burgate Manor,
Fordingbridge
Hampshire SP6 1EF
Tel: +44 (0)1425 650035
Email: info.newforest@nationaltrust.org.uk
www.nationaltrust.org.uk

President: HRH The Prince of Wales

Chair of London and South East Committee: David Coleman

Director for London and South East: Nicola Briggs

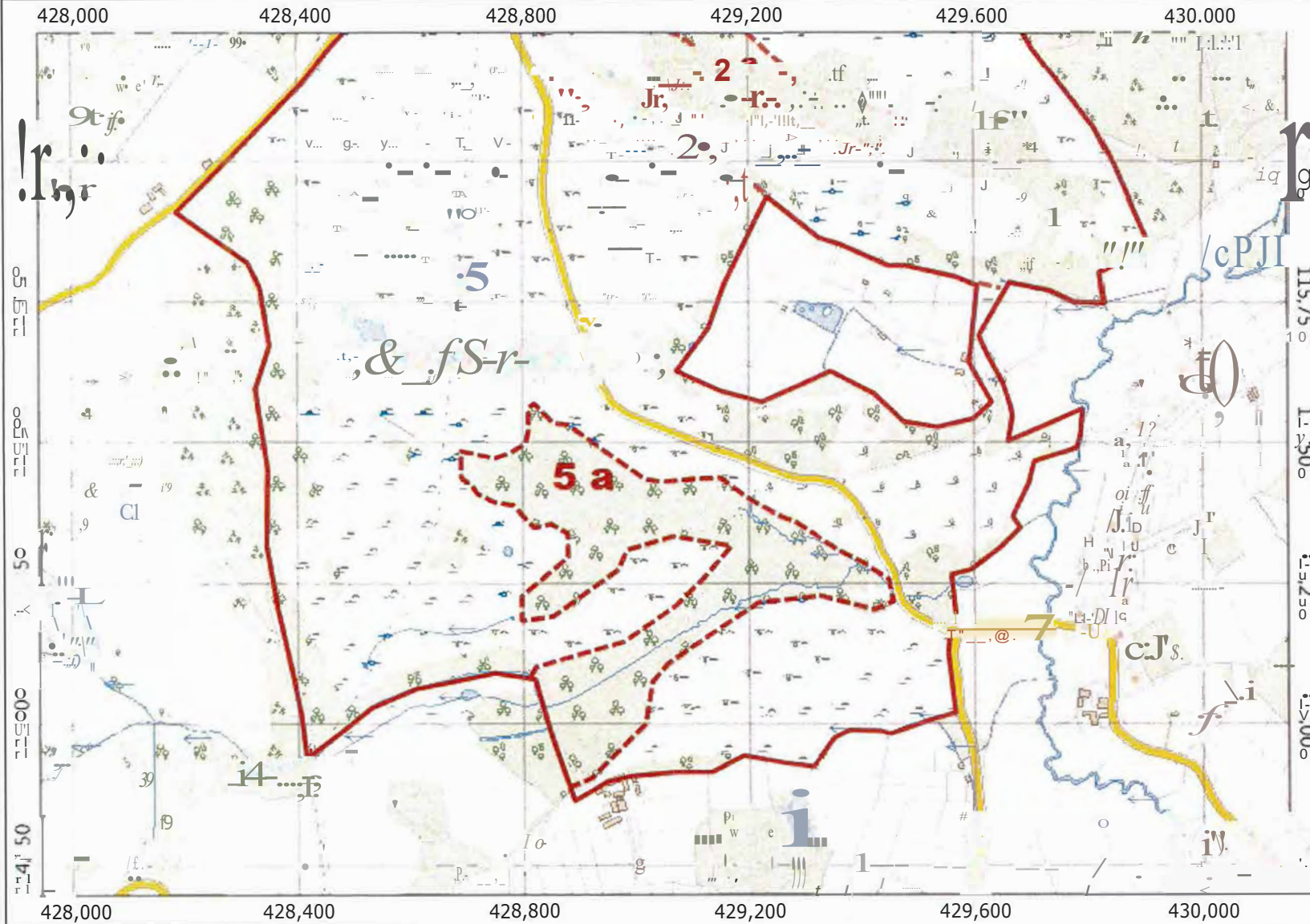
Registered office:

Heelis, Kemble Drive, Swindon, Wiltshire SN2 2NA

Registered charity number 205846



Bramshaw Commons (South) Felling Licence 2016



Legend

Area 5

Pine and Birch to be thinned from more open areas to reduce encroachment of trees onto these SSSI priority open space heath and mire habitats.

Area 5a

Removal of Pine to reduce encroachment within the bog woodland

1: 10,000



0A 0 0.20 0A Kilometers

British National Grid
© Crown copyright and database rights 2016 Ordnance Survey 100023974

This map is a user generated static output from an Intranet mapping site and is for reference only. Data layers that appear on this map may or may not be accurate, current, or otherwise reliable.

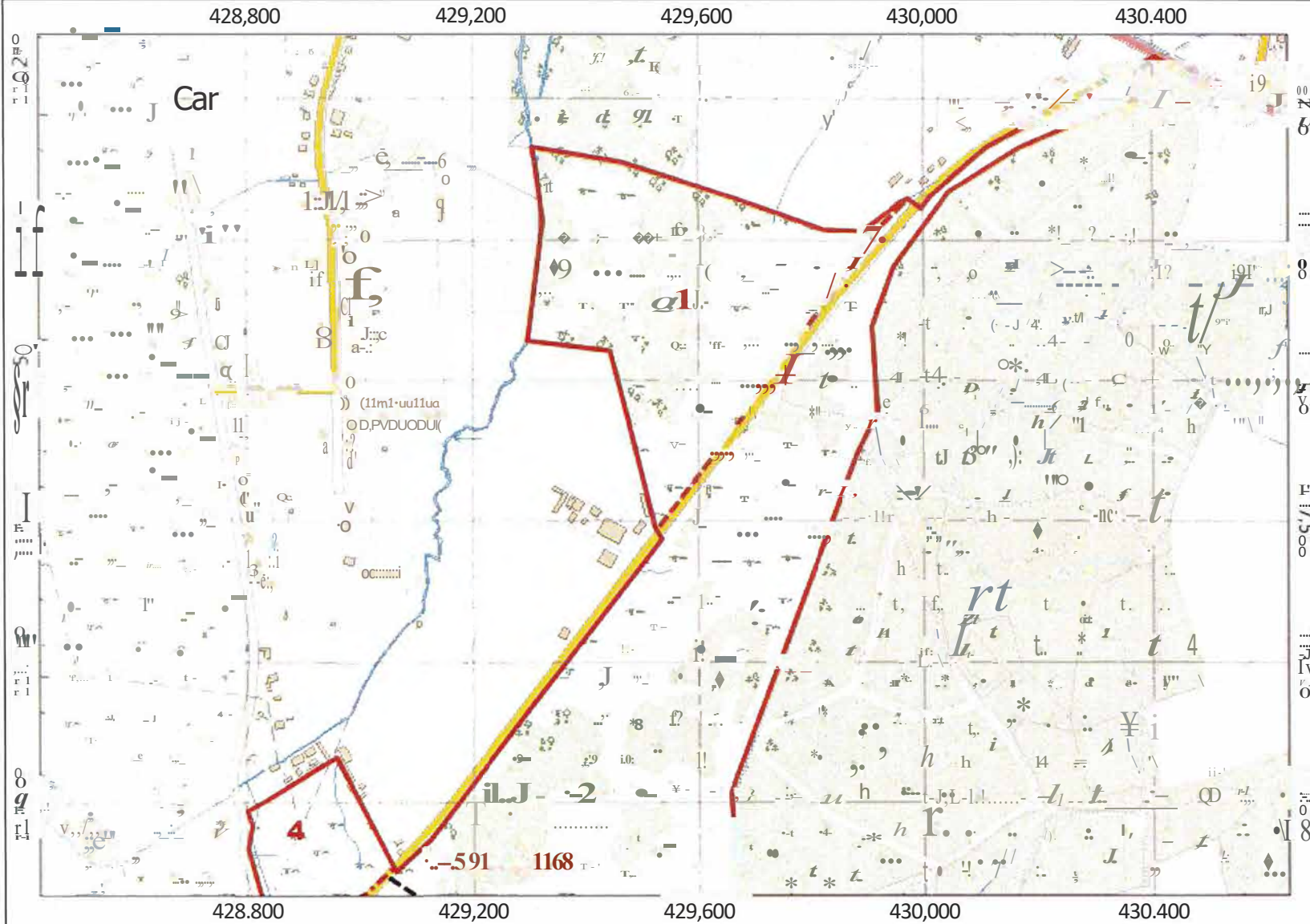
THIS MAP IS NOT TO BE USED FOR NAVIGATION

Notes

This map was automatically generated using the National Trust GIS Browser



Bramshaw Commons (North) Felling Licence 2016



Legend

- Areas 1,2,3,4
- Thinning to remove invasives such as Turkey Oak and to reduce density of Scots Pine from established clumps and from open areas.
- Pine and Birch to be thinned from more open areas to reduce encroachment of trees onto these SSSI priority open space heath and mire habitats.

1: 10,000



0.4 0 0.20 0.4 Kilometers

British_National_Grid
© Crown copyright and database rights 2016 Ordnance Survey 100023974

This map is a user generated static output from an Intranet mapping site and is for reference only. Data layers that appear on this map may or may not be accurate, current, or otherwise reliable.

THIS MAP IS NOT TO BE USED FOR NAVIGATION

Notes

This map was automatically generated using the National Trust GIS Browser